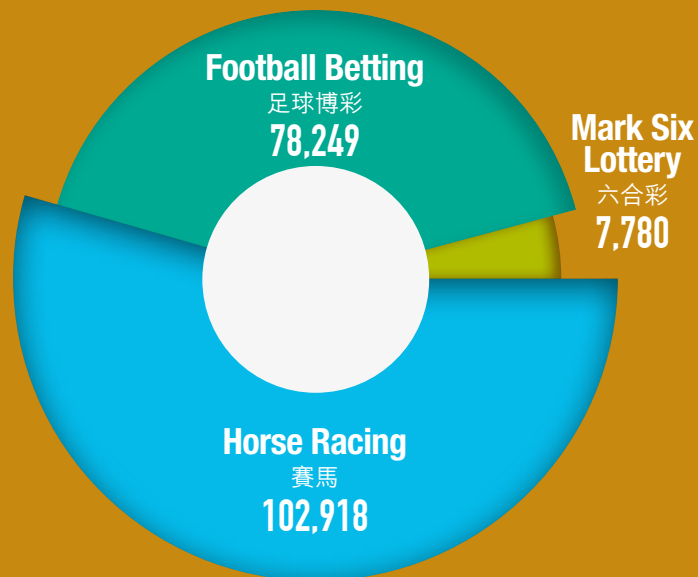


Performance Highlights

2014/15 Financial Year
二〇一四/一五財政年度業績概覽



Amounts bet by local customers

本地顧客投注額

188,947

HK\$M 百萬港元

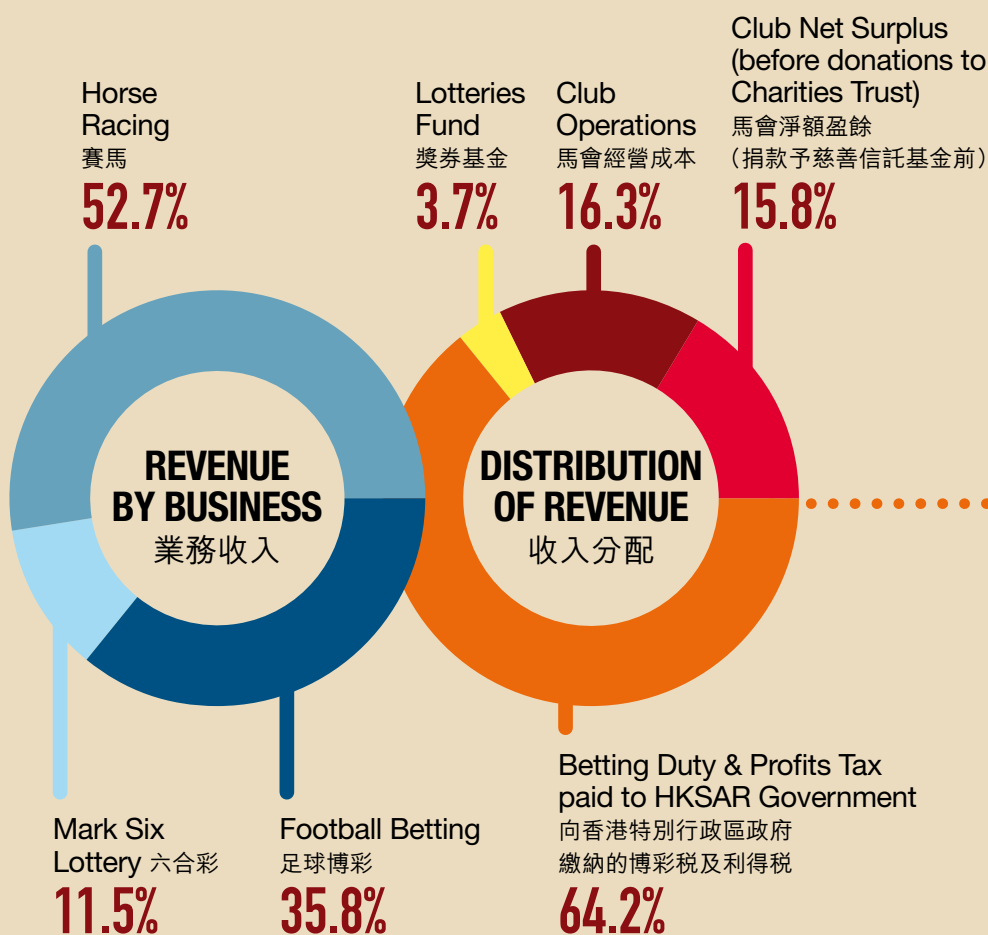
83.5% of the amounts bet are returned as dividends, rebates and lottery prizes
顧客投注額當中的百分之八十三點五作為彩金、回扣及獎券獎金

Betting and Lottery Revenue

博彩及獎券收入

31,231

HK\$M 百萬港元



Increase of almost 84% since 2002/03, the year before football betting introduced
較二〇〇二/〇三年推出足球博彩的前一年度，增長近百分之八十四



Horse Race Betting Duty (賽馬博彩稅)	12,001
Football Betting Duty (足球博彩稅)	5,594
Lottery Duty (獎券博彩稅)	1,945
Profits Tax (利得稅)	509

About **71%** of Club Net Surplus
 donated to Charities Trust
 約百分之七十一的馬會淨額盈餘
 撥捐慈善信託基金

**Record Charitable
 Donations**

歷年新高慈善捐款

3,871

HK\$M 百萬港元



Club's charitable contributions
 touch the lives of 慈善捐獻惠及

75% of the population
 本地人口

Employment created
 創造就業機會

24,409 Jobs
 職位

Full-time
 全職

6,101

Part-time
 兼職

18,308