




香港賽馬會  
The Hong Kong Jockey Club



# **RIDING HIGH TOGETHER FOR A BETTER FUTURE**

Environmental Report  
2015

# The Club is committed to continually improving its practices and working in partnership to enable a better future for our stakeholders

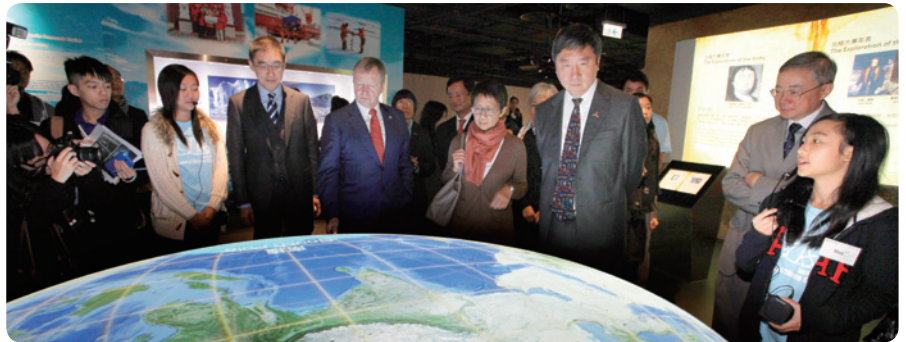


We are taking a front-running position in the global horse racing industry, and Hong Kong's hosting of the prestigious Asian Racing Conference in May 2014 afforded us the opportunity to demonstrate to the record 800 overseas delegates not only our operational successes but also our commitment to sustainability. Determined to avoid the rampant wastage of paper that such conferences so often generate, we presented each delegate with a tablet computer into which all presentations had been pre-loaded. This also enabled them to make and retain notes in a more convenient and efficient manner, which was much appreciated.

In turn, this measure is but one small element of the Club's wide-reaching efforts to put sustainability into practice. We believe that operating in a sustainable and responsible manner is vital for the Club's long-term success as well as enables us deliver better services to our customers. Most of all, it helps enhance Hong Kong's quality of life now and in the future, in keeping with our long-standing commitment to contributing to the community.

Our vision is to embed sustainability into the culture and major processes of the Club, enhance public awareness of sustainability via our sphere of influence, and be a catalyst in driving Hong Kong towards a sustainable future. Through collaboration both internally and externally, we want to seek greater value from our operations while reducing negative impacts and burdens.

In the two years since we last issued a Sustainability Report, we have continued to look at new or refurbished Club buildings and facilities against the latest local and international design standards and wherever possible, adopt a "Mean, Lean, Green" design philosophy to optimise project's environment impact. An excellent example is our new Sha Tin Communications and Technology Centre which has been designed from the ground up as a green building, minimise electricity use, and workplace areas are ergonomically designed to ensure a safe, healthy working environment for our employees.



A visit to the Museum of Climate Change

**We put our sustainability vision into practice by understanding our stakeholders expectations, closely monitoring our 'hoofprint' and setting clear priorities and targets.**

Meanwhile we have an ongoing programme of retrofitting more efficient lighting and cooling systems at our racecourses, clubhouses, office buildings, retail branches and other Club premises. I am pleased to report that despite a significant overall growth in operations and services since our benchmark year of 2009, we have been able to reduce energy consumption by around 5% and total carbon emissions are broadly unchanged.

Our sustainability efforts extend to a number of external projects both in Hong Kong and across the Mainland border, where we have invested over RMB5.5 million in a Dongjiang afforestation project. This involved the planting of over 350,000 new trees in this important ecological area that is the source of much of Hong Kong's fresh water. The newly afforested area will help mitigate climate change and enhance the local ecology and biodiversity, as well as providing new employment opportunities for local farmers.

Sustainability is a process that requires continually striving to reach higher and higher goals, and we know there will be many unforeseeable challenges ahead. But we also recognise that building a sustainable operation is our best defence against future uncertainties and is the right thing to do, not just for The Hong Kong Jockey Club, but the wider community whom we serve.

### **Winfried Engelbrecht-Bresges**

Chief Executive Officer



# Managing Our Hoofprint



CARBON  
EMISSIONS



ENERGY  
EFFICIENCY



GREEN  
MOBILITY



RESOURCE  
MANAGEMENT



WATER  
MANAGEMENT



BIODIVERSITY





## The Club is focusing on its carbon emissions, its energy efficiency and the reduction or recycling of waste materials.

The core elements of the Club's sustainability strategy are concern to reduce its environmental impact and recognition that many of the related issues require community-wide solutions. In taking initiatives to enhance its own sustainability, the Club also aims to contribute to a greener and healthier Hong Kong.

In pursuit of these goals, the Club is focusing on its carbon emissions, its energy efficiency and the reduction or recycling of waste materials, as well as demonstrating responsible care for the environment at the sites where it operates. Positive progress has been made, despite the challenges of supporting a growing business.

Given that the Club's 'hoofprint' covers a number of diverse but interlinked operations including horse racing, betting entertainment and hospitality, which in turn involve a wide range of different properties and infrastructure, implementing change can be a complex venture. To address this, the Club is exploring globally and supporting local efforts to advance technology and best practice.

The Board of Management and Sustainability Committee are responsible for co-ordinating the different priorities and interface issues. Each subsidiary and department of the Club is responsible for optimising its own performance, according to its differing nature and hoofprint, and for meeting the needs of its specific stakeholders.

The Club is also conscious that besides improving its own performance, it is in a position to influence others and be a catalyst in the market – both through its own operations and its role as a major community benefactor. With this in mind, the Club collaborates closely with suppliers, academia and research bodies to explore innovative ways of benefiting the wider community.





# CARBON EMISSIONS

Carbon emissions are a useful tool for harmonising the Club's efforts towards a common goal.

The Club's total greenhouse gas emissions in the past two years were 242,759 tonnes of CO<sub>2</sub>-e (2013/14: 119,643, 2014/15: 123,116), a slight increase on the previous reporting period due to the Club's growing scale of operations. Since the base year 2009/10, total emissions have shown a 2.7% increase.

The Club has been awarded the Carbon Care Label for its efforts to manage and control carbon emissions, and continues to look for means of improvement; for example, we will continue to improve carbon reporting for subsidiaries.

Electricity consumption, which is the major constituent of the Club's carbon emissions, has been reduced by 5.1% since the base year 2009/10. However, carbon emissions have not declined in line with this as the Government-endorsed fuel mix used by local power suppliers has in fact caused emissions to increase.

In addition to efforts to reduce carbon emissions, the Club has invested in two afforestation projects at the source of Dongjiang (East River), China. For this long-term investment, climate change alleviation is as important as the co-benefits, including enhancement to biodiversity and job opportunities creation. By end of 2015, a total of 3,386 tonnes CO<sub>2</sub>e carbon credits will be accumulated according to the certified Project Design Documents. The carbon credits from each project will be verified at 5-year intervals.



Please refer to p. 24 the Performance Summary Data for more information about the carbon emission.

Total Greenhouse  
Gas Emissions

**123,116** tonnes  
of CO<sub>2</sub>-e in the 2014/15

Electricity  
Consumption



but carbon emissions still rise  
from base year 2009/10



All Hong Kong Operations  
Cert. No.: CCL-2014-2-01-127







# ENERGY EFFICIENCY

## Efficient Information Architecture

has been adapted to deliver more electronic services more efficiently.

## Energy-efficient Lighting and Cooling Systems

have been retrofitted at the Club's betting branches, office buildings, clubhouses and other premises and all new racecourse venues.

## District Cooling Systems

serves the 20 different stable buildings at Sha Tin Racecourse.

## Energy-efficient Floodlighting

has been commissioned at both tracks.

The major constituent of the Club's carbon emissions is electricity consumption, in particular at the two racecourses. Electricity use has been reduced by 5.1% since the base year 2009/10 through significant investment in technology upgrades and optimising plant operations.

Maintaining an energy-saving trend is also a challenge due to growing business volume and increased customer usage of electronic services – a trend the Club has been encouraging to reduce the use of paper. In addition, growing customer demand for ready access to large volumes of information has increased the Club's need to invest in new data centres and equipment.

Since 2008, more than HK\$13.8 million has already been invested retrofitting energy-efficient lighting and cooling systems in the Club's Off-Course Betting Branches (OCBBs), office buildings, clubhouses and other premises. This includes external signage and lighting, car park areas, lift lobbies and toilets, in addition to those areas directly used by customers, Members or staff.

## Overall Electricity Used

# 5.1%↓

in 2014/15, but increased 1% compared to 2013/14

Under the maxim of "Use Wisely, Waste Less", the Club's Property Department (see sidebar story on page 15) has developed a comprehensive sustainability strategy for both new and existing buildings, with a strong focus on energy and resource efficiency. All new projects are based on building life cycle management principles and asset performance, and alternative energy sources are being explored. Major upcoming developments

such as the Conghua Training Centre, Happy Valley Clubhouse Extension and new data centres, as well as a renovation programme for the OCBBs, are all aimed at enhancing the Club's overall sustainability performance.



## ENERGY EFFICIENCY

### District cooling, lighting and building management systems to save energy

On the horse racing side, more energy-efficient floodlighting has been commissioned at both tracks during 2014/15, replacing systems that were close to 20 years old. The Happy Valley Racecourse floodlighting improved efficiency by a remarkable 30%, while the Sha Tin Racecourse installation, which covers a wider reach, recorded a 10% improvement. Moreover, the new floodlighting was carefully designed to reduce light spill to surrounding residential buildings, responding to residents' needs.

Meanwhile, the Information Technology Division is adapting its architecture to deliver more electronic services more efficiently.

As part of the ongoing Racecourse Master Plan, in which the Club has committed to invest a total of HK\$6.3 billion, all new and refurbished racecourse venues have been equipped with energy-efficient lighting and cooling systems. This means, however, that there are now more air-conditioned areas than before, hence the Club is putting more emphasis on building management systems to optimise efficiency into the future.

At Sha Tin Racecourse, a district cooling system has been installed as part of recent major renovations to the stable blocks. It works by circulating chilled water to different buildings for air conditioning, thus achieving higher energy efficiency. In the light of its proven energy efficiency, the system is now being extended to cover the Sha Tin Central

### Investment in Lighting Retrofitting

HK\$ **13.8** million since 2008

### Electricity Consumption being Avoided Every Year from Light Retrofitting

**4** million kWh

Complex – which includes offices, the Equine Hospital and Racing Laboratory), the Apprentice Jockeys' Quarters and the Central Stores – replacing existing air-cooled chillers which are not energy-efficient.

A number of Club premises have received Energywise labels under the Hong Kong Awards for Environmental Excellence (HKAEE) or been honoured with Power Smart Awards by Friends of the Earth Hong Kong.



Please refer to p. 24 the Performance Summary Data for more information about the energy performance.



The Happy Valley Racecourse floodlighting has improved efficiency.





# GREEN MOBILITY

The Club operates a total fleet of around 255 vehicles including cars, delivery vans, horse transporters and off-road vehicles for track maintenance and the like.

Since 2010, initiatives have been taken to convert all off-road vehicles and for track maintenance equipment are run on Euro V B5 biodiesel fuel, along with air-conditioning systems for the horse transporters and the back-up electricity generators for the racecourses. The Club's own waste oil and grease is used to produce biodiesel thus promoting the circular economy.

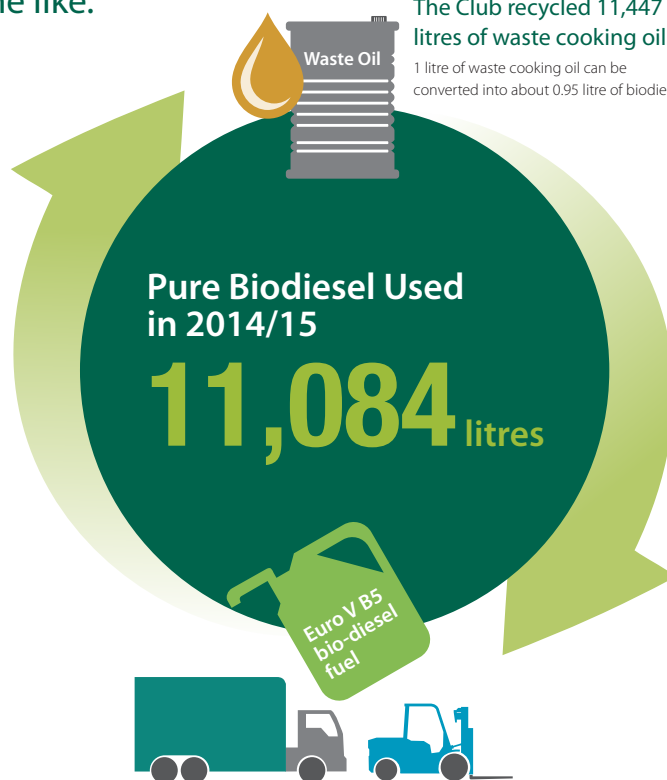
Last year, the Club used 221,670 litres of B5 biodiesel fuel, which is a blend of 5% biofuel and 95% Euro V diesel, thus reducing fossil fuel consumption by 11,084 litres.

Since October 2014, to support the continuing development of electric vehicles in Hong Kong, it has been Club procurement policy to acquire only electric or hybrid cars whenever practicable, with the target of increasing its electric car fleet to 25% of the total within three years. In connection with this, a network of 41 charging stations has been set up at Club premises around Hong Kong for use by employees and Members.

The fuel performance of all the Club's vehicles is being closely monitored to see where further improvements can be made, and new systems are being put in place to increase the sharing of pool cars.

The Club recycled 11,447 litres of waste cooking oil

1 litre of waste cooking oil can be converted into about 0.95 litre of biodiesel



The Club's own waste oil and grease is used to produce biodiesel, thus promoting the circular economy.



A further 21 electric cars have been added to the pool car fleet for 11 departments during 2015.



Please refer to p. 24 the Performance Summary Data for more information about the green mobility.



# RESOURCE MANAGEMENT

In keeping with the principle of “Use Wisely, Waste Less”, the Club is continuously exploring its use of resources, and setting targets for materials and waste, to reduce the life-cycle impacts of these resources and extract more value from them.

Several of the Club’s premises have been awarded Wastewi\$e labels under the HKAEE in recognition of their efforts.

In the Betting Division, there has been a sustained effort since the early 1990s to encourage customers to switch from the use of paper betting slips to electronic channels. The increase usage of the mobile application launched to improve customers’ experience is reducing the need of paper. Bet slip usage has declined by 19.1% since the base year 2009/10 (2014/15: 523 million sheets, 2009/10: 647 million), with a 7.1% decrease in the past year alone. Meanwhile, the paper used for bet slips has been switched to a Forest Stewardship Council (FSC) certified source, and customers are encouraged to dispose of used bet slips in a proper manner for recycling.

To save a further 6.5 million metres of paper each year, the Club plans to reduce the size of its betting tickets by 12mm each by redesigning them and reversing the machine flow.

## Bet Slip Usage

compared with 2013/14

**7.1%↓**

Continuous bet slip reduction showing positive results of efforts in Retail

## Bet Slip Purchased (thousand sheets)

in 2014/15

**523,354**

in 2013/14

**563,305**

### Paper

Printers have been replaced with shared machines



### Cooking Oil

Recycled into biodiesel



### Food

Surplus food is donated to social welfare organisations



### Glass Bottle

Recycled into eco-brick



This small but effective measure is expected to reduce paper costs by around HK\$1.5 million a year.

In addition, numerous initiatives have been implemented to reduce or optimise paper usage in Club offices, including the adoption of a managed print service under which over 1,350 individual printers have been replaced with 443 shared machines, bringing a 50% saving in electricity costs. To date, a 6.1% reduction in paper usage has been recorded compared with the 2009/10 baseline figure, despite the number of full-time staff increasing by over 12.1% in this period.

Sourcing wisely, the Club now uses recycled or FSC-source paper for nearly all its paper and printing needs, while the print runs of Club publications have been significantly reduced with Members and customers being encouraged to receive them electronically.

At the racecourse and clubhouse dining outlets, surplus food is donated to social welfare organisations and converted by them into nutritious hot meals which are distributed to the elderly and other needy residents across the city. Two such services run by St James’ Settlement and Food Angel are also supported financially by donations from the Club’s Charities Trust. Food that cannot be reused is sent where practicable for recycling as compost, animal feed or ‘upcycled’ products, for example fish food pellets.





## RESOURCE MANAGEMENT

Waste cooking oils from Club kitchens is collected for recycling into biodiesel. In the past year, the Club has extended this initiative to grease trap waste. Used glass bottles are collected and recycled into eco-bricks through the Hong Chi Glass Bottle Recycling Programme, another social venture supported by Charities Trust, which also provides fulfilling employment for the mentally handicapped and helps promote the concept of recycling across the wider community. Launched in 2010, this project has now been extended to cover 300 collection outlets citywide, including housing estates and popular bar/restaurant areas.

In the Racing and Membership Divisions, gift products have been redesigned to use simpler and more eco-friendly packaging, and an attractive range of upcycled items created

from waste products such as used horseshoes. These have won much admiration from customers, especially among overseas visitors to the racecourses. The Club has also helped St James' Settlement establish an Upcycling Centre at their new headquarters building in Wan Chai, a project funded by the Charities Trust, by donating reusable items such as wooden wine boxes and wine corks.

As part of its support for a Job Shadowing Programme run by the Hong Kong Institution of Engineers, the Club has taken secondary school students to visit its training stable and the Environmental Protection Department's composting facilities, so as to help nurture the interest of Hong Kong's young generation in recycling and green lifestyles.

### Gift Product

Redesigned to use simpler and eco-friendly packaging and an attractive range of upcycled items created from waste products



Please refer to p. 25 the Performance Summary Data for more information about the resource management.

The Club has taken secondary school students to visit its training stable





# WATER MANAGEMENT

The Club is increasingly concerned about careful management of its own use of water, and started to look into water intensity in its supply chain.

While there has been a 7.9% increase in fresh water consumption since 2011/12 (2014/15: 1.73 million m<sup>3</sup>, 2011/12: 1.60 million m<sup>3</sup>), much of this can be attributed to the installation of more water-cooled chillers, which achieve corresponding savings in energy growth.

To help reduce general water usage, a set of Water Policy and Water Management Guidelines was issued to all divisions in 2014, based on a Club-wide water audit. These policies and guidelines are now being implemented through revised work practices and instructions. Practices will continue to be reviewed and appropriate targets set for each division to reduce consumption.

## Water Consumption

compared with 2013/14

**1%↓**

since 2011/12

**7.9%↑**

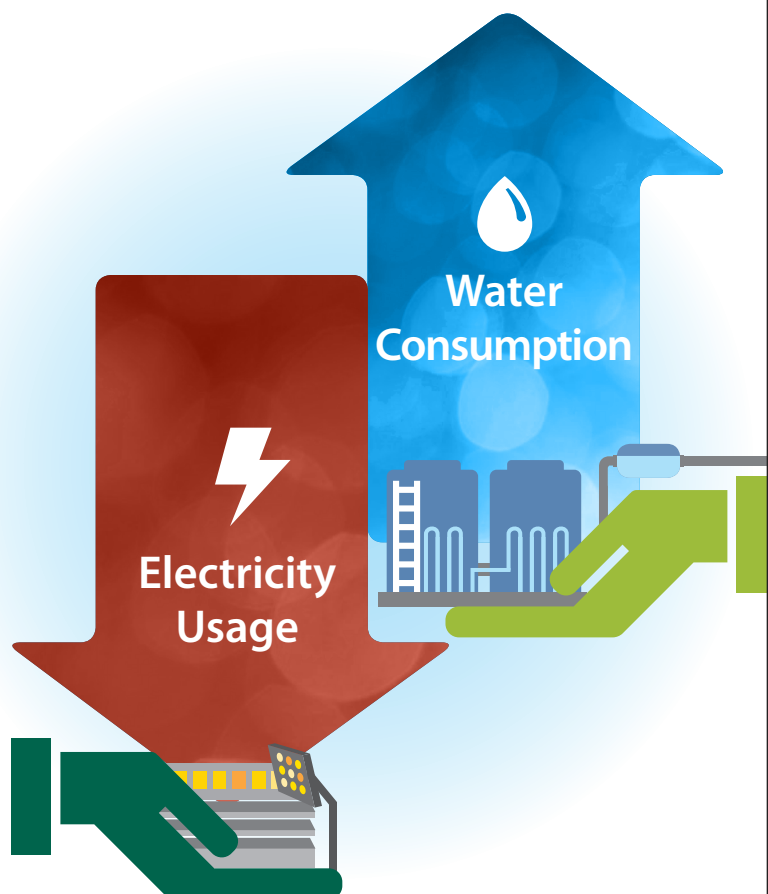
Water Consumption in 2014/15

**1.73** million m<sup>3</sup>

in 2011/12

**1.60** million m<sup>3</sup>

Since 2011/12, the water consumption has increased owing to more water-cooled chiller plants installed and business growth



Installing water-cooled chiller plants have saved electricity but resulted in increased water usage



Please refer to p. 24 the Performance Summary Data for more information about the water management.





# BIODIVERSITY

During 2014/15 the Club has undertaken detailed biodiversity study of three major properties entrusted to it, namely Sha Tin Racecourse, Happy Valley Racecourse and Beas River Country Club and found no significant negative impacts from its operations.

This takes reference from the standards set out in the UN Convention on Biological Diversity which was extended to Hong Kong in 2012. We were aware that the Hong Kong SAR Government was drawing up a Biodiversity Strategy Action Plan.

This study will also enable the Club to better understand and appreciate the biodiversity resources in its facilities, and thereby derive suitable strategies to care for biodiversity and for future planning. An example was the discovery of a bird species, called Little Swift (*Apus nipalensis*), nesting on the ceiling of a building in Sha Tin Racecourse in 2014. Measures were subsequently developed to protect the birds and their nests during the course of ceiling painting work.

Within the three properties involved, Penfold Park in the infield of Sha Tin Racecourse is already well recognised for its biodiversity and is a nesting ground for egrets and other migratory birds. It provides local residents with a much-appreciated 'green lung' in the middle of Sha Tin New Town. In particular, it is one of Hong Kong's few pet-friendly public recreation areas, and has become a popular local dog-walking

venue. The Club also stages a number of community events there each year.

The Jockey Club Kau Sai Chau Public Golf Course, opened in 1995, provides a useful illustration of how a sports facility can benefit the local eco-system with careful planning and design. The island it occupies near Sai Kung was formerly used as an army firing range, which had badly scarred the landscape, but it has since been transformed into a green and pleasant location that has attracted back numerous species of flora and fauna. The course has its own desalination plant to reduce the usage of fresh water, a concern at many other golf courses, and its entire fleet of golf carts has been converted to run on solar power. In addition, the Club has pioneered the use of solar-hybrid powered catamarans in Hong Kong to transport golfers to and from the island.

The Club is now exploring how it can responsibly further develops this popular facility for the community's benefit while best caring for habitats and biodiversity.



Penfold Park in the infield  
of Sha Tin Racecourse



Happy Valley Racecourse



Beas River Country Club



The Jockey Club Kau Sai  
Chau Public Golf Course



This new nine-storey office building adjacent to Sha Tin Racecourse has been designed to bring together around 3,000 Club staff previously based at disparate locations and create a world-class workplace in which they can take pride and feel motivated.

Ergonomic principles were applied to the design of workplace areas to ensure a safe, healthy, pleasant and productive working environment for Club staff.

The first staff began moving in in May 2015, since when management's focus has been on successfully commissioning the building systems and consulting with staff to ensure that optimal efficiency benefits of the building can be realised.

The Sha Tin Communications and Technology Centre (SCTC) has been designed from the ground up as a green building and received BEAM Plus (Building Environmental Assessment Method) certification. It was also a finalist in the 2014 Green Building Awards organised by The Hong Kong Green Building Council.

The Club's project team applied Life Cycle Cost tools to ensure environmentally-sound selections of systems, equipment and construction materials. IT systems energy

efficiency and motion sensors have been used to minimise electricity usage, and sun-shading features to reduce heat gain. A roof garden also helps keep the building cool, with rainwater collected for irrigation. Solar panels on the roof provide hot water for washrooms.



## THE SHA TIN COMMUNICATIONS AND TECHNOLOGY CENTRE

### Roof Garden

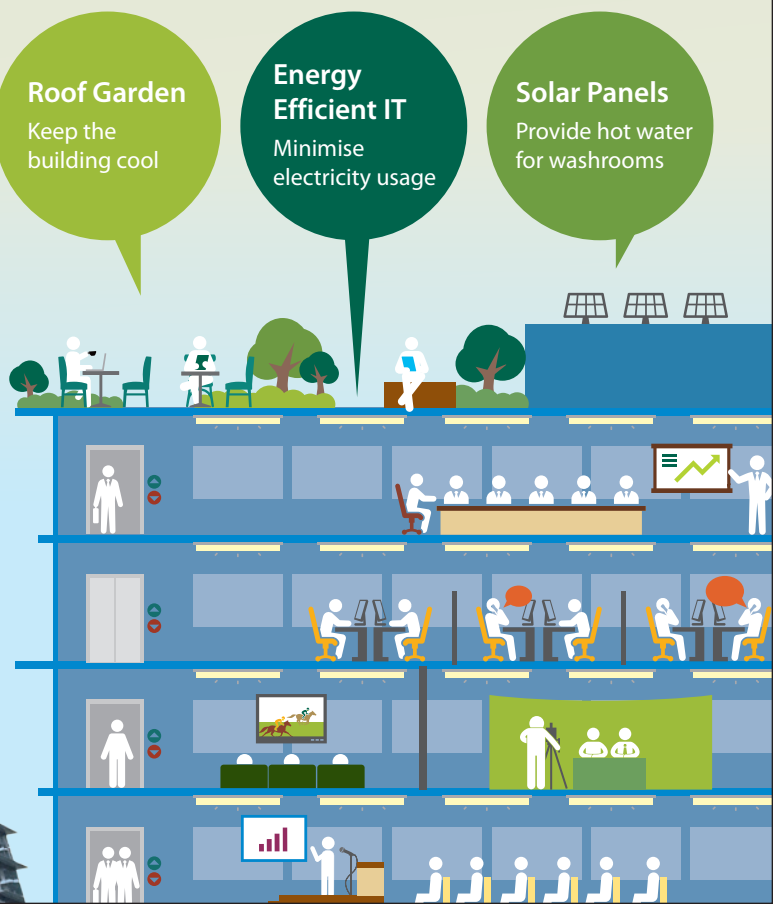
Keep the building cool

### Energy Efficient IT

Minimise electricity usage

### Solar Panels

Provide hot water for washrooms





The Department has set out 11 focus areas for driving all-round sustainability performance wherever feasible.

The Department is also responsible for new building projects such as the Sha Tin Communications and Technology Centre and Conghua Training Centre, and is overseeing the Charities Trust-funded conservation and revitalisation of the historic Central Police Station Compound.

Recognising the importance of these major projects in meeting both the Club's and the community's future needs and expectations, the Club has set up a dedicated team to oversee their execution from planning to delivery stage, in close consultation with internal and external stakeholders. It is one of the only major organisations in Hong Kong to adopt such an approach.

In planning new building or renovation projects, the Department has developed a Building Life Cycle Costing approach, taking account of all costs to be incurred over a projected 50-year life cycle including site acquisition costs where appropriate, development costs, operational and maintenance costs, renewal costs and eventual decommissioning.

In addition, it has adopted a 'Mean, Lean, Green' philosophy to optimise the environmental impact of all new construction or renovation projects – Mean referring to reducing energy demand; Lean to increasing energy efficiency and reducing distribution losses; and Green to adopting environment-friendly features and tapping renewable energy sources where feasible.

Performance in all these areas is tracked on a regular basis, and Facilities Managers are expected to monitor and recommend ways of improvement in waste, energy, emissions, water, materials usage and recycling, as well as strengthen stakeholder engagement.

These efforts have brought positive improvement in energy efficiency and reduced carbon emissions, with an estimated 5.96 million kWh of electricity usage avoided in the past two years through new infrastructure projects alone. This provides the Club with valuable guidance for future investment plans.

## GREEN PROPERTY MANAGEMENT

Property Department stands in the front line of the Club's sustainability efforts as it has responsibility for facilities management and renovations of most of the properties owned or leased by the Club in Hong Kong and Mainland China, including the two racecourses, more than 100 Off-Course Betting Branches and the Club's major office buildings and staff quarters, together occupying more than 2.6 million sq m of land. The Club's first Carbon Audit in 2010 found that they accounted for about 75% of the organisation's total carbon emissions.



# Towards a Better Future



GREENING HONG  
KONG (AND BEYOND)



# GREENING HONG KONG (AND BEYOND)



OCBB Green Day



Red Packet Recycling Campaign

The Club's not-for-profit business model, whereby it provides a regulated and responsible channel to meet the public demand for betting and returns the proceeds to the community through taxes and charitable donations, is unique globally.

This approach also helps stimulate a culture of responsibility in society and promotes willingness to share learning.

As well as endeavouring to make its own operations more energy-efficient and more sustainable, the Club is keen to help make Hong Kong a greener place and promote environmental awareness within the community. It does this through staff volunteer and outreach activities like special Green Days for customers, and a wide range of community projects funded either directly by the Club or through its Charities Trust.

The Club is even taking initiatives across the Mainland border in Guangdong to protect the major source of Hong Kong's fresh water in Heyuan and benefit the local community at its Racehorse Training Centre now under development in Conghua (see separate story on page 39).

## CARING HEARTS

For the past two years, the Club's Off-Course Betting Branches (OCBBs) have staged Green Days, aiming to promote sustainable practices to Club customers. Staff volunteers

have served as HKJC Green Ambassadors to share green tips with visitors to the branches, such as switching to electronic betting and disposing of bet slips and newspapers in a proper manner.

More than half the Club's 102 OCBBs took part in the 2015 event on 22 April, which coincided with Earth Day and was supported by Greeners Action and the Government's Environmental Protection Department. More than 2,300 customers were able to take part in green quizzes as a means of educating them about ways to reduce paper usage and recycle after use. Gifts were given out as an incentive to those pledging to practice waste reduction and recycling in their daily lives.

At Chinese New Year, the Club's OCBBs supported a Red Packet Recycling campaign organised by Greeners Action, distributing 350,000 used *lai see* packets to the public at 60 branches and collecting another 270,000. These initiatives are all part of a Caring Hearts campaign designed to help establish the OCBBs as hubs of community information and activities in their areas.



## GREENING HONG KONG (AND BEYOND)

### PROMOTING WASTE REDUCTION

As a means of promoting the importance of waste reduction to local students from a young age, the Club joined hands with the New Territories School Heads Association and Greeners Action to launch a Waste Reduction at Source School Programme in September 2014.

About 105 kindergartens and primary schools in the New Territories have since registered for this three-year environmental education programme which includes tailor-made teaching kits and school-based workshops, as well as a special mascot to add colour and life to the materials.

This is one of the latest initiatives under the HKJC Community Network, bringing together the Club's community partners and CARE@hkjc staff volunteers to benefit different groups in society. Around 120 Club volunteers share tips with the students on waste reduction and green lifestyles.



No. of Schools  
Registered for the  
Environmental  
Education Programme

105

A special mascot to  
add colour and life to  
the materials



Promoting Waste  
Reduction





### Great Wall Clean-up near Huanghuacheng

Club staff volunteered to clean and protect the historic site and felt happy to have created a better environment for the visitors.

### Coastal Clean-up

Over

**80** kg of garbage

was cleared in three hours by the Club's "Rising Star" trainees.



### Eco-Enzyme Workshop

Over 30 staff learnt not to waste food by making their own eco-cleaning agents from vegetables and fruit.



### Green Movie Night

Some

**2,000** participants

enjoyed the first-ever movie shows on the giant screen at Happy Valley Racecourse and pledged to adopt a greener lifestyle.



### Recycling Campaigns

We collected food, toys, e-waste, *lai see* packets, hampers and other recyclables from staff throughout the year.



In 2013/14, the Green Action theme was...

### Reduce Our Waste



## GREEN ACTION PROGRAMME

Each year the Club organises a Green Action Programme under a different theme to increase awareness of sustainability issues among its 24,000 staff and their families and encourage them to adopt a green lifestyle. In the past two years more than 3,000 employees, family members and friends have participated in over 30 different activities, including seminars, visits to places of ecological interest, beach clean-ups, recycling campaigns and carnivals. Special green menus have been offered in staff restaurants, resulting in some 1,000 low-carbon meals served each month.

In 2013/14, the Green Action theme was 'Waste Less' and many of the activities were aimed at encouraging staff to practice the Three Rs – Reduce, Reuse and Recycle – at home and the workplace. They included a food donation initiative, an upcycling fashion exhibition workshop, an urban clean-up in Victoria Park, and collection and recycling programmes for used toys, e-waste and *lai see* packets. Over 15,000 *lai see* packets were collected alone, weighing 35 kg. There were also eco-enzyme workshops to encourage staff not to waste left-over food.

Bringing the programme to a memorable close was a Green Movie Night in the open air at which more than 2,000 Club employees, friends and families pledged to adopt a greener lifestyle and enjoyed a first-ever showing of feature films on the Diamond Vision screen at Happy Valley Racecourse. A number of local green groups and community organisations also joined the event to engage attendees through information booths or game stalls.

The 2014/15 programme took the theme of...

## Act to Conserve Our Biodiversity



The 2014/15 programme took the theme of 'Biodiversity' and included an eco-rice planting and harvesting workshop at Long Valley; a Walk for Nature in the WWF's Mai Po Nature Reserve; a cultural and environmental tour to Fung Yuen which is noted for its richness in butterfly and dragonfly species; and a trip to the Hoi Ha Marine Life Centre.

Staff volunteers also conducted three waste surveys in the Aberdeen coastal waters as part of the Coastal Watch project, a collaboration between the WWF and Environmental Protection Department to conserve Hong Kong's marine resources; and had the opportunity to assist with tree planting at the Club-funded Dongjiang Afforestation Project (see page 21).

In both years, staff acted as Green Ambassadors to support Green Days at the Club's Off-Course Betting Branches, offering friendly advice to customers on reducing their use of paper by using electronic wagering channels and disposing of used

### Tree Appreciation Tour

Led by tree experts, a group of 40 staff and family members were excited to discover amusing facts about trees through interactive activities.



### Coastal Watch Project

Staff conducted three waste surveys in the Aberdeen coastal waters with the aim of conserving Hong Kong's marine resources.

### Walk for the Environment

After a two-hour guided tour along trails near Ma On Shan Country Park, participants chose some open grassland with stunning views to hold group games and a picnic.



### HKJC OCBB Green Day

Almost

**3,800** customers

were engaged by the Club's Green Ambassadors and pledged to play their part in reducing waste.

### Eco-rice Farming Workshop at Long Valley

Staff and their family members had a real taste of rice planting and harvesting work, and learnt more about the ecological significance of Long Valley.



### Afforestation Project

The project saw a total of

**178,000** trees

planted, some of them by the Club's Green Ambassadors.



betting tickets in a proper manner for recycling. Almost 3,800 customers were engaged by the Ambassadors and pledged to play their part in reducing waste, while the events also attracted positive media coverage.

In Mainland China, 34 staff from the Beijing HKJC Clubhouse made their own contribution to the Green Action Programme in November 2014 by organising a clean-up of waste left behind by visitors to a section of the Great Wall near Huanghuacheng.



HKJC



# DONGJIANG AFFORESTATION PROJECT

**To protect the source of much of Hong Kong's fresh water, the Club is funding the HKJC Forest, a proactive initiative launched in 2014.**

Across the Mainland border near Heyuan City, Guangdong, over 350,000 trees in a 4,000 mu (268 hectare approx) area around the source of the Dongjiang (East River) have been planted. By using a wide variety of indigenous broad-leaved tree species, the Club aims to create a mixed forest that will bring ecological and economic benefits to the area.

It is estimated that 100,000 tonnes of carbon dioxide can be absorbed by the afforested area in 20 years, helping to mitigate climate change. The Club has already invested RMB5.5 million in the first two phases and plans to continue funding for another phase.

Importantly, the project will also help create job opportunities for local farmers and ultimately contribute to the wider economy of the area and to tourism. The Club has appointed a research institute to investigate the long-term benefits and confirmed that it will have beneficial impacts in terms of increased forest size, improved ecological habitat, enhanced biodiversity and protecting the water source.



Club staff have taken part in some of the tree-planting efforts to strengthen their appreciation of the value of such initiatives, and a video has been produced to show customers at the Off-Course Betting Branches

Also in Guangdong, the Club is incorporating numerous green elements into the new Racehorse Training Centre it is creating in Conghua, due to begin operations in 2018. Comprehensive Environmental Impact Assessments were conducted prior to the project receiving approval from the relevant authorities, and the Club has formed a Sustainability Steering Committee to oversee the environmental aspects of its design and construction.

The new Training Centre will not only contribute to the Club's sustainability by enabling it to expand and elevate its training facilities to leading world standards – a goal hitherto constrained by space limitations at Sha Tin – but also benefit the local community in Conghua through increased employment and tourism

In the course of the site formation work, the Club has taken the opportunity to widen and deepen three existing drainage channels that divert storm water from nearby Liangming Village, so as to make the area less prone to flooding.

HKJC



# THE TRUST-FUNDED ENVIRONMENT PROJECT

Proactively launched by The Hong Kong Jockey Club Charities Trust in 2008 with funding of HK\$350 million, the Environment Project encompasses a wide range of public education programmes and initiatives that raise community awareness of the impact of climate change and foster sustainable development. Highlighted here are some of the programmes supported under this initiative during the past two years.



## FOOD ANGEL JOCKEY CLUB FOOD RESCUE AND HOT MEAL ASSISTANCE PROGRAMME

The Food Angel Jockey Club Food Rescue and Hot Meal Assistance Programme, set up in March 2014, is a partnership with the Bo Charity Foundation under which surplus food is collected from restaurants, clubs and supermarkets for conversion into nutritious hot meals for the needy – thus bringing the dual benefits of reducing food waste and helping the city's underprivileged.

The Trust's HK\$18.6 million donation has enabled the Foundation's Food Angel operation to set up a new central kitchen in Sham Shui Po and extend its services to most parts of West Kowloon and the New Territories. Over two million hot meals for the needy will be distributed during the three-year project as well as 120,000 food packs, while 1,020 tonnes of surplus food will be recovered each year.

The project complements a similar Trust-funded initiative launched in 2013, the HK\$19.7 million St James' Settlement Jockey Club People's Food Bank Hot Meal Service, which utilises surplus food to provide around one million hot meals a year to underprivileged residents across East Kowloon.



## RTHK NATURE & MAN IN ONE

The RTHK Nature & Man in One campaign, conducted in late 2013, was a joint initiative to raise awareness of environmental issues among local residents, especially the younger generation. A key component of the HK\$5 million campaign was a TV documentary series looking at the planet's environmental challenges and explaining how these are closely linked to people's daily lives, and how everyone has a role to play in protecting the environment.

The six one-hour episodes attracted much positive feedback. They were complemented by roving exhibitions, a documentary short films competition and a schools education programme comprising seminars, education kits and online learning materials. The six seminars were attended by more than 3,000 students from 60 secondary schools, while 3,000 education kits were produced and distributed to schools, libraries and social service organisations.



## HONG CHI JOCKEY CLUB GREEN EDUCATION CAMPAIGN FOR KINDERGARTENS AND SPECIAL SCHOOLS

The Hong Chi Jockey Club Green Education Campaign for Kindergartens and Special Schools is a new green education campaign encouraging pupils to put environmental concepts into practice in areas such as clothing, food, housing and transportation. It includes teaching kits, school workshops, educational tours, fun days and exhibitions. The Trust has long been a close partner of Hong Chi and is funding the rebuilding of its main Pinehill Village complex; the Hong Chi Jockey Club Glass Bottle Recycling Project is another very successful product of this collaboration, which not only helps enhance the environment but also provides work opportunities for young people under Hong Chi's care.



## JOCKEY CLUB CARBON CARE OPEN INNOVATION LAB

The Jockey Club Carbon Care Open Innovation Lab is a new open platform designed to engage stakeholders from the education and business sectors, as well as the media, in promoting cross-sector collaboration and solving sustainability challenges. It includes seminars on carbon reduction and sustainability, as well as awards to motivate the co-creation of sustainability initiatives. Educational institutions, NGOs, businesses and individuals are invited to form teams to explore sustainability challenges and develop innovative solutions.

## PROJECT ZERO

Under Project Zero, launched in May 2015 with a HK\$23 million Trust donation, various green elements have been incorporated into Wu Kai Sha Youth Village, run by the Chinese YMCA of Hong Kong, to demonstrate to young people how to reduce and offset their carbon footprint. Some 500,000 day or overnight campers use the village each year.

A notable feature of the recently-renovated site is the Jockey Club Zero Carbon Living Zone,



comprising 10 bungalows installed with energy-saving items for cooling, lighting and water heating, along with a system for energy measurement. This enables campers to monitor their electricity consumption in each different area during their stay.

Together, the various energy-saving installations of Project Zero are expected to reduce carbon emissions by 84 tonnes and achieve an annual saving in electricity costs of HK\$100,000.



# PERFORMANCE SUMMARY DATA

## Environmental and Social Performance (Hong Kong operations)

	2014/15	2013/14	2012/13	2009/10 Baseline
<b>Carbon emissions (CO<sub>2</sub>-e in tonnes)</b>	123,116	119,643	119,972	119,829
Indirect emissions from electricity	114,938	112,749	113,010	113,267
Fugitive emissions from refrigerant	4,293	2,677	2,780	2,686
Direct emissions from facilities	2,342	2,654	2,685	2,367
Direct emissions from transportation	1,016	1,030	948	1,035
Indirect emissions from gas	527	533	549	474
<b>Carbon emissions by purchased electricity consumption (CO<sub>2</sub>-e in tonnes)</b>				
Racecourses	56,624	55,514	55,017	52,982
Off-course betting branches	18,159	17,512	18,377	18,837
Clubhouses	18,760	18,286	18,167	18,082
Offices	12,757	12,886	13,190	13,827
Telebet Centres and Integrated Contact Centre	6,830	6,833	6,584	7,981
Staff Quarters	1,220	1,155	1,135	1,012
Public Riding Schools	588	563	540	546
<b>Electricity and towngas consumption</b>				
Electricity (kWh)	166,658,517	165,009,539	170,207,042	175,616,314
Towngas (units)	850,660	874,481	888,774	798,673
<b>Emission of ozone-depleting substances by weight (kg)</b>	88	73	110	132
<b>Fuel consumption (Litres)</b>				
Diesel	143,025	149,382	144,280	420,343 <sup>3</sup>
Petrol	80,229	83,073	81,568	77,833
LPG	6,750	10,564	9,522	11,685
Biodiesel (B5)	221,670	316,620	290,155	0
<b>Water consumption (m<sup>3</sup>)</b>				
From municipal source	1,730,404	1,748,890	1,703,527	–

3. Data corrected from previous reports

Note:

For SCTC, full transfer of operational control is expected in late 2015 so it was not included in 2014/15 data





# PERFORMANCE SUMMARY DATA

	2014/15	2013/14	2012/13	2009/10 Baseline
<b>Materials purchased</b>				
Bet slips – 100% FSC (thousand sheets)	523,354	563,305	571,418	647,294
Copy paper – Recycled or FSC paper (boxes)	9,131	8,435	8,993	9,714
Disposable plastic cutlery (pcs)	550,000	570,000	569,200	717,220
Food containers – others (pcs)	1,715,900	327,000	2,568,100	2,333,528
Food containers – biodegradable (pcs)	1,640,580	2,453,000	1,398,000	388,580
Horse bedding – newspaper (23kg bags)	384,959	464,394 <sup>4</sup>	512,210	585,260
Horse bedding – Wood shaving (18-21kg bags)	366,580	251,421	177,757	70,130
LED lamps (units)	7,228	7,527	8,467	–
Paper hand towels (boxes)	10,307	10,035	9,700	11,446
Toilet paper (boxes)	6,944	7,437	6,478	8,084
<b>Source separation, donations and recycling</b>				
Food donated (kg): <sup>5</sup>	17,703	10,615	–	–
<b>Recycled:</b>				
Paper (kg)	610,120	444,339	491,087	385,967
Plastics (kg)	21,736	26,526	42,930	4,367
Metal (kg)	1,910	3,767	285	857
Aluminium cans (kg)	2,546	2,352	3,384	3,070
Glass bottles (kg)	100,360	96,073	100,779	21,059
Food waste (kg)	704,123	696,873	570,970	–
Used cooking oil (litres) <sup>6</sup>	11,447	11,259	–	–
e-waste (units)	6,557	3,894	2,817	5,137
Light tube (kg)	1,902	1,171	982	2,604
<b>Social</b>				
<b>Staff training (hrs):</b>				
Average no. of hours (Full-time)	42.1	40.7	43.3	41.7
Average no. of hours (Part-time)	10.4	9.9	11.8	11.4
Total training hours	421,756	404,213	444,470	445,550
<b>Occupational Injuries:</b>				
Injuries per 1000 employees	13.0	12.8	12.0	11.5
Hong Kong averages <sup>7</sup>	12.8	13.2	14.1	15.0
Fatalities	0	0	0	0

4. Data corrected from previous reports

5. Unused food donated to charitable organisations to serve the needy

6. Data available since 2013/14

7. Source: Labour Department, Hong Kong SAR Government

Note:

Food waste recycling started in 2012/13 and food donations started in Nov 2013

For SCTC, full transfer of operational control is expected in late 2015 so it was not included in 2014/15 data



# PERFORMANCE SUMMARY DATA

## Environmental and Social Performance (Beijing Clubhouse)

	2014/15	2013/14	2012/13	2009/10 Baseline
<b>Employee – total</b>	481	486	447	448
<b>By employment type:</b>				
Full-time employee	375	402	378	371
Part-time employee	106	84	69	77
<b>By gender:</b>				
Female	218	209	201	197
Male	263	277	246	251
<b>Carbon emissions (CO<sub>2</sub>-e in tonnes)<sup>8</sup></b>				
Direct emissions from facilities	472	481	467	465
Indirect emissions from electricity	9,384	9,556	9,133	9,928
<b>Electricity and natural gas consumption</b>				
Electricity (kWh)	8,869,244	9,275,744	9,114,340	9,383,904
Natural gas (kWh)	234,439	238,651	231,999	230,748
<b>Water consumption (m<sup>3</sup>)</b>				
From municipal source	94,538	97,117	93,360	87,268
<b>Source separation and recycling (kg)</b>				
Green waste	59,148	76,438	111,654	–
Food waste	43,631	75,591	74,557	–
Paper	8,271	5,411	10,203	–
Glass bottles	3,819	2,872	7,236	–
Plastics	2,172	2,350	2,839	–
<b>Social</b>				
<b>Staff training (hrs)</b>				
Average no. of hours (Full-time)	18.4	18.9	18.0	15.7
Average no. of hours (Part-time)	41.6	46.4	62.4	26.0
Total training hours	11,313	11,479	11,116	7,842
<b>Occupational Injuries:</b>				
Injuries per 1000 employees	2.6	0	5.3	5.4
Fatalities	0	0	0	0

8. Carbon emissions corrected as the updated emission factors published by the Department of Climate Change of the National Development and Reform Commission (NDRC) were adopted

Note:

Other operations in Mainland China are not covered