

S1-4 'Dash' (Handicap) - Racing Colours



BLITHE SPIRIT



BOOM THE GROOM



CASPIAN PRINCE



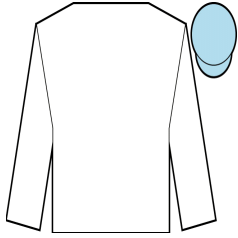
DESERT LAW



DUKE OF FIRENZE



GREEN DOOR



HARRY HURRICANE



HAY CHEWED



HUMIDOR



KIMBERELLA



LATHOM



MALJAA



MONSIEUR JOE



MUKAYNIS



NORMAL EQUILIBRIUM



RED BARON



ROUDEE



SANDFRANKSKIPSGO



SECRETINTHEPARK



SEEKING MAGIC