

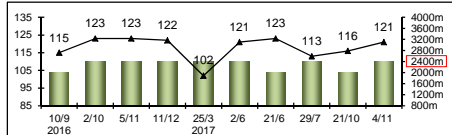


高地之舞
HIGHLAND REEL (IRE) 5 b h
 Galileo (IRE) - Hveger (AUS) (Danehill (USA))
 Owner(s): Derrick Smith & Mrs John Magnier & Michael Tabor

岳伯仁 (愛爾蘭)
A P O'Brien (IRE)

莫雅
R Moore

126 lb
(123)



HK Starts : 3 (1-1-0-0-1) Right-handed : 15 (6-4-1-1-3) Jockey : 14 (4-1-3-2-4)
 Pre Import : - Sha Tin-Turf : 3 (1-1-0-0-1) GF+ : 9 (6-1-1-0-1)
 Lifetime : 26 (9-6-3-2-6) Non-Turf : - Good : 8 (3-3-1-1-0)
 2017 : 6 (2-0-2-1-1) Distance : 13 (5-3-1-2-2) Yielding : 4 (0-0-0-0-4)
 G1 : 21 (6-4-3-2-6) Track & Dist : 2 (1-1-0-0-0) Soft/Hvy : 5 (0-2-1-1-1)
 First Up : 6 (1-1-1-1-2) 2200-2800 : 13 (5-3-1-2-2) HK\$: 73,058,110
 G1 win : '17 Prince of Wales's S. 1993m, '17 Coronation Cup 2405m, '16 Breeders' Cup Turf 2400m, '16 King George VI & Queen Elizabeth S. 2400m, '15 LONGINES Hong Kong Vase 2400m, '15 Secretariat S. 2000m

Pos	Index	Date	Perf Rating	Race Category & Name	Track	Dist/Course/Going	Wt	Jockey	Draw	Race Sectional Time	Race Time	Horse Final	Position & Margin in Running	Finish	Odds	Winner/Second			
7/12	-	10/9/16	115	G1 Irish Champion S.	LEO, IRE	2000 LH Y	133	C O'Donoghue	6	-	-	-	2.08. ⁹³	-	7.6 ⁵	10/1 Almanzor			
2/16	-	2/10/16	123	G1 P. de l'Arc de Triomphe	CHY, FR	2400 RH G	131	J Heffernan	11	-	-	-	2.23. ⁶¹	-	2.1 ⁸	25 Found			
1/12	-	5/11/16	123	G1 Breeders' Cup Turf	SA, USA	2400 LH F	126	J Heffernan	12	23.4 ⁶	23.1 ⁸	23.6 ⁶	2.23. ⁰⁰	-	1.7	1.6 ⁵ 1.4	4.8 Flintshire		
2/14	*253	11/12/16	122	G1 LONGINES Hong Kong Vase	ST, HK	2400 RH G	126	R Moore	10	24.3 ⁵	23.4 ²	24.1 ³	2.26. ²²	24.2 ¹	1.0 ⁸	1.1	1.2 ⁵	2.0 ⁵ 1.5F Satono Crown	
7/7	-	25/3/17	102	G1 Dubai Sheema Classic	MEY, UAE	2410 LH Y	126	R Moore	3	-	-	-	2.32. ³⁹	-	7.1 ²	5/2 Jack Hobbs			
1/10	-	2/6/17	121	G1 Coronation Cup	EPS, GB	2405 LH G	126	R Moore	3	-	-	-	2.33. ³⁴	-	1.1 ⁸	9/4F Frontiersman			
1/8	-	21/6/17	123	G1 Prince of Wales's S.	ASC, GB	1993 RH GF	126	R Moore	6	-	-	-	2.05. ⁰⁴	-	1.1 ³	9/4 Decorated Knight			
4/10	-	29/7/17	113	G1 King George VI & Queen Elizabeth S.	ASC, GB	2392 RH GS	133	R Moore	4	-	-	-	2.36. ²²	-	4.9 ³	9/2 Enable			
3/10	-	21/10/17	116	G1 Champion S.	ASC, GB	1993 RH S	131	R Moore	9	-	-	-	2.11. ⁷⁵	-	3.7 ³	17/2 Cracksman			
3/13	-	4/11/17	121	G1 Breeders' Cup Turf	DMR, USA	2400 LH F	126	R Moore	3	25.1 ⁴	24.4 ⁴	23.7 ⁵	2.26. ¹⁹	-	3.2 ⁵	3.2	4.1 ⁵	3.0 ⁸ 2.4F Talismanic	
		10/12/17		G1 LONGINES Hong Kong Vase	ST, HK	2400 RH	126	R Moore											

Established as top-class world traveller. The 2015 G1 LONGINES Hong Kong Vase winner finished a gallant 2nd to Satono Crown last year. Has this season added the G1 Coronation Cup (2405m) at Epsom and G1 Prince Of Wales's Stakes (1993m) at Ascot to 6 career G1 wins, including last year's G1 Breeders' Cup Turf (2400m), a race in which he was 3rd behind Talismanic last start. Leads or sits handy. No ground issues.

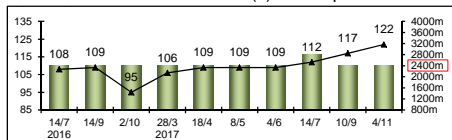


攻心如焚
TALISMANIC (GB) 4 b/br c
 Medaglia d'Oro (USA) - Magic Mission (GB) (Machiavellian (USA))
 Owner(s): Godolphin SNC

費伯華 (法國)
A Fabre (FR)

巴米高
M Barzalona

126 lb
(122)



HK Starts : - Right-handed : 4 (0-1-1-1-1) Jockey : 15 (6-5-0-1-3)
 Pre Import : - Sha Tin-Turf : - GF+ : 1 (1-0-0-0-0)
 Lifetime : 16 (6-5-1-1-3) Non-Turf : - Good : 4 (3-0-0-0-1)
 2017 : 7 (3-3-1-0-0) Distance : 10 (4-3-1-0-2) Yielding : -
 G1 : 4 (1-0-0-1-2) Track & Dist : - Soft/Hvy : 11 (2-5-1-1-2)
 First Up : 5 (2-2-0-0-1) 2200-2800 : 11 (5-3-1-0-2) HK\$: 20,092,160
 G1 win : '17 Breeders' Cup Turf 2400m

Pos	Index	Date	Perf Rating	Race Category & Name	Track	Dist/Course/Going	Wt	Jockey	Draw	Race Sectional Time	Race Time	Horse Final	Position & Margin in Running	Finish	Odds	Winner/Second			
5/8	-	14/7/16	108	G1 GP de Paris - 3yo	STC, FR	2400 LH GS	128	M Barzalona	8	-	-	-	2.29. ⁵⁶	-	5.2 ⁸	8.5 Helene Charisma			
1/6	-	14/9/16	109	L P. Turenne - 3yo	STC, FR	2400 LH G	123	M Barzalona	3	-	-	-	2.31. ⁵⁵	-	1.3	1.8F Al Haram			
11/16	-	2/10/16	95	G1 P. de l'Arc de Triomphe	CHY, FR	2400 RH G	123	M Barzalona	5	-	-	-	2.23. ⁶¹	-	11.1 ⁹	42 Found			
2/5	-	28/3/17	106	L P. de la Porte de Madrid	STC, FR	2400 LH S	128	M Barzalona	2	-	-	-	2.38. ⁹²	-	2.3	1.7F Tiberian			
1/6	-	18/4/17	109	L P. Lord Seymour	ML, FR	2400 LH G	132	M Barzalona	3	-	-	-	2.42. ⁹⁶	-	1.1 ⁵	1.9F Zemindari			
2/6	-	8/5/17	109	G3 P. d'Hedouville	STC, FR	2400 LH VS	123	M Barzalona	1	-	-	-	2.35. ⁴⁴	-	2.1	2.0F Tiberian			
2/5	-	4/6/17	109	G2 GP de Chantilly	CHY, FR	2400 RH GS	126	M Barzalona	1	-	-	-	2.29. ⁴⁵	-	2 ^{Nk}	3.5 Silverwave			
1/10	-	14/7/17	112	G2 P. Maurice de Nieuil	STC, FR	2800 LH G	126	M Barzalona	4	-	-	-	2.58. ⁴⁰	-	1.1 ³	3.1F Marmelo			
3/6	-	10/9/17	117	G2 P. Foy	CHY, FR	2400 RH S	128	V Cheminaud	6	-	-	-	2.35. ⁸⁶	-	3.1 ⁸	20 Dschingis Secret			
1/13	-	4/11/17	122	G1 Breeders' Cup Turf	DMR, USA	2400 LH F	126	M Barzalona	1	25.1 ⁴	24.4 ⁴	23.7 ⁵	2.26. ¹⁹	-	5.4	5.4	3.1	1.0 ⁵ 15.1 Beach Patrol	
		10/12/17		G1 LONGINES Hong Kong Vase	ST, HK	2400 RH	126	M Barzalona											

Honest French four-year-old who has reached a career zenith after taking the G1 Breeders' Cup Turf (2400m) at Del Mar last start. Showed promise as a three-year-old with 4th in the G1 Prix du Jockey Club (2100m) behind Almanzor, but has progressed handily this season with 3 wins and 4 placings from 7 starts. Also took the G2 Prix Maurice de Nieuil (2800m) in July. Has led before but best when allowed to track the speed. No going concerns.

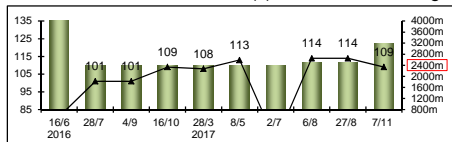


王族統治
TIBERIAN (FR) 5 b h
 Tiberius Caesar (FR) - Toamasina (FR) (Marju (IRE))
 Owner(s): Australian Thoroughbred Bloodstock Pty Ltd, H Volz et al

郭艾迪 (法國)
A Couetil (FR)

柏兆雷
O Peslier

126 lb
(114)



HK Starts : - Right-handed : 9 (2-4-0-1-2) Jockey : 6 (4-0-0-0-2)
 Pre Import : - Sha Tin-Turf : - GF+ : -
 Lifetime : 18 (6-4-0-4-4) Non-Turf : - Good : 8 (3-2-0-1-2)
 2017 : 6 (4-0-0-0-2) Distance : 8 (2-3-0-2-1) Yielding : -
 G1 : 4 (0-0-0-1-3) Track & Dist : - Soft/Hvy : 10 (3-2-0-3-2)
 First Up : 4 (1-1-0-0-2) 2200-2800 : 13 (5-3-0-3-2) HK\$: 3,786,880
 G1 win : Nil

Pos	Index	Date	Perf Rating	Race Category & Name	Track	Dist/Course/Going	Wt	Jockey	Draw	Race Sectional Time	Race Time	Horse Final	Position & Margin in Running	Finish	Odds	Winner/Second			
14/17	-	16/6/16	81	G1 Gold Cup	ASC, GB	4000 RH S	126	A Fouassier	8	-	-	-	4.26. ²¹	-	14.4 ⁶	66/1 Order of St George			
2/7	-	28/7/16	101	L P. Hubert Baguenault	VHY, FR	2400 RH G	125	A Fouassier	2	-	-	-	2.28. ⁴⁵	-	2 ^{SH}	2.8F Holdthasigreen			
4/10	-	4/9/16	101	G1 GP von Baden	BAD, GER	2400 LH S	132	T Jarnet	2	-	-	-	2.33. ⁷⁹	-	4.10 ³	18.4 Iquitos			
2/6	-	16/10/16	109	G2 P. du Conseil de Paris	CHY, FR	2400 RH S	128	T Jarnet	6	-	-	-	2.29. ⁶³	-	2 ^{SNk}	5.5 One Foot In Heaven			
1/5	-	28/3/17	108	L P. de la Porte de Madrid	STC, FR	2400 LH S	126	O Peslier	3	-	-	-	2.38. ⁹²	-	1.3	8.5 Talismanic			
1/6	-	8/5/17	113	G3 P. d'Hedouville	STC, FR	2400 LH VS	126	O Peslier	2	-	-	-	2.35. ⁴⁴	-	1.1	3.8 Talismanic			
7/10	-	2/7/17	67	G1 GP de Saint-Cloud	STC, FR	2400 LH GS	128	O Peslier	2	-	-	-	2.27. ⁷⁶	-	7.3 ³	7.8 Zarak			
1/7	-	6/8/17	114	G3 P. de Reux	DEA, FR	2500 RH G	136	O Peslier	1	-	-	-	2.40. ⁶⁰	-	1 ^{SH}	4.7 Doha Dream			
1/7	-	27/8/17	114	G2 GP de Deauville	DEA, FR	2500 RH G	132	O Peslier	5	-	-	-	2.44. ⁶⁸	-	1 ^{SNk}	5.5 Doha Dream			
7/23	-	7/11/17	109	G1 Melbourne Cup - hcp	FLEM, AUS	3200 LH G	122	O Peslier	22	-	-	-	36. ²³	3.21. ¹⁹	3.2	2.2	7.9 ¹⁵	31 Rekindling	
		10/12/17		G1 LONGINES Hong Kong Vase	ST, HK	2400 RH	126	O Peslier											

Six-time winner, between 2400m and 3000m, from 18 starts. Has always been just around the mark without winning, but produced a strong season with 4 wins from 6 starts, including the G3 Prix de Reux (2500m) and the G2 Grand Prix de Deauville (2500m). Trapped deep and set alright early before sticking on for a solid 7th in the G1 Melbourne Cup (3200m) latest. Can race anywhere but usually makes an early bid. Untried on ground better than good.



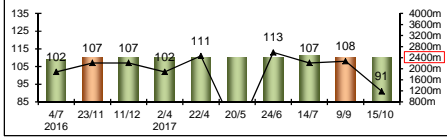
化學能量
CHEMICAL CHARGE (IRE) 5 ch h
 Sea The Stars (IRE) - Jakonda (USA) (Kingmambo (USA))
 Owner(s): Qatar Racing Limited



白祈達 (英國)
R M Beckett (GB)

莫艾誠
O Murphy

126 lb
(113)



HK Starts	:	-	Right-handed	:	8 (2-5-1-0-0)	Jockey	:	7 (3-1-1-0-2)
Pre Import	:	-	Sha Tin-Turf	:	-	GF+	:	3 (0-2-1-0-0)
Lifetime	:	14 (5-6-1-0-2)	Non-Turf	:	3 (2-1-0-0-0)	Good	:	3 (3-0-0-0-0)
2017	:	7 (3-1-1-0-2)	Distance	:	8 (2-3-1-0-2)	Yielding	:	1 (0-1-0-0-0)
G1	:	1 (0-0-0-0-1)	Track & Dist	:	-	Soft/Hvy	:	4 (0-2-0-0-2)
First Up	:	4 (2-2-0-0-0)	2200-2800	:	10 (3-4-1-0-2)	HK\$:	1,623,580
G1 win	:	Nil						

Pos	Index	Date	Perf Rating	Race Category & Name	Track	Dist/Course/Going	Wt	Jockey	Draw	Race Sectional Time	Race Time	Horse Final	Position & Margin in Running	Finish	Odds	Winner/Second					
2/7	-	4/7/16	102	L Lenebane S.	ROS, IRE	2341 RH H	137	C Keane	6	-	-	2.45. ²⁶	-	-	2.2 ³	7/4F Red Stars					
2/12	-	23/11/16	107	L Wild Flower S.	KEM, GB	2400 RH Poly	132	S Levey	12	-	-	2.32. ⁵⁷	-	-	2.0 ⁵	8/1 Crimean Tatar					
2/15	-	11/12/16	107	L P. Max Sicard	TOU, FR	2400 RH S	131	G Benoist	12	-	-	2.29. ²⁸	-	-	2 ²	3.5F Satanijim					
1/6	-	2/4/17	102	- conditions	DON, GB	2400 LH G	126	O Murphy	1	-	-	2.32. ⁹⁹	-	-	1 ²	15/8F Saigon City					
2/8	-	22/4/17	111	G3 John Porter S.	NBY, GB	2400 LH GF	126	O Murphy	5	-	-	2.31. ⁵⁸	-	-	2 ^{Nk}	9/2 Muntahaa					
6/6	-	20/5/17	67	G3 Aston Park S.	NBY, GB	2400 LH S	126	O Murphy	1	-	-	2.42. ⁷⁵	-	-	6.3 ²	7/2 Hawkbill					
3/12	-	24/6/17	113	G2 Hardwicke S.	ASC, GB	2392 RH GF	127	O Murphy	12	-	-	2.28. ⁹⁴	-	-	3.1 ⁸	25/1 Idaho					
1/6	-	14/7/17	107	- conditions	MUS, GB	2495 RH G	136	P Makin	2	-	-	2.40. ³⁸	-	-	1.2 ⁵	5/6F Sir Chauvelin					
1/6	-	9/9/17	108	G3 September S.	KEM, GB	2399 RH Poly	131	O Murphy	3	-	-	2.34. ⁵⁵	-	-	1 ^{HD}	13/8F Scarlet Dragon					
6/10	-	15/10/17	91	G1 Canadian International S.	WO, CAN	2400 LH S	126	O Murphy	10	25. ⁵⁴	25. ⁸⁸	23. ⁹⁷	2.34. ³⁷	-	10 ⁹	10 ^{8.5}	8 ^{11.5}	6 ^{17.8}	5.75	Bullards Alley	
		10/12/17		G1 LONGINES Hong Kong Vase	ST, HK	2400 RH	126	O Murphy													

Consistent type with 5 wins, between 1600m and 2500m, from 14 starts. Rarely tested out of stakes company in last two seasons. Placings in the G3 John Porter Stakes (2400m) and G2 Hardwicke Stakes (2392m) preceded a first Group success in the G3 September Stakes (2399m) at Kempton two back. Usually races prominently or sits midfield. Goes on most surfaces but has only missed the placings twice, including last start – both times on slick, shifting ground.



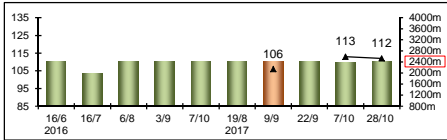
丹山高迪
DANEHILL KODIAC (IRE) 4 b c
 Kodiak (GB) - Meadow (GB) (Green Desert (USA))
 Owner(s): Davies, Smith, Carr, Brown, Govier



向禮倫 (英國)
R Hannon (GB)

李輝
S Levey

126 lb
(113)



HK Starts	:	-	Right-handed	:	7 (3-1-1-1-1)	Jockey	:	7 (2-1-2-1-1)
Pre Import	:	-	Sha Tin-Turf	:	-	GF+	:	4 (1-0-2-1-0)
Lifetime	:	16 (5-3-3-4-1)	Non-Turf	:	3 (1-1-0-1-0)	Good	:	5 (1-2-0-2-0)
2017	:	5 (2-1-1-1-0)	Distance	:	9 (3-2-2-1-1)	Yielding	:	-
G1	:	-	Track & Dist	:	-	Soft/Hvy	:	4 (2-0-1-0-1)
First Up	:	3 (1-0-0-2-0)	2200-2800	:	9 (3-2-2-1-1)	HK\$:	1,411,550
G1 win	:	Nil						

Pos	Index	Date	Perf Rating	Race Category & Name	Track	Dist/Course/Going	Wt	Jockey	Draw	Race Sectional Time	Race Time	Horse Final	Position & Margin in Running	Finish	Odds	Winner/Second					
5/16	-	16/6/16	-	King George V S. - 3yo hcp	ASC, GB	2400 RH S	121	S Levey	5	-	-	2.34. ⁵¹	-	-	5 ⁹	33/1 Gold Mount					
4/6	-	16/7/16	-	- hcp	NBY, GB	2005 LH GF	125	P Dobbs	3	-	-	2.05. ³⁵	-	-	4.6 ⁵	4/1 Stars Over the Sea					
1/10	-	6/8/16	-	Shergar Cup Classic - 3yo hcp	ASC, GB	2400 RH GF	133	G Larena	6	-	-	2.30. ²⁷	-	-	1 ²	10/1 Combative					
2/12	-	3/9/16	-	Appletiser S. - 3yo hcp	ASC, GB	2400 RH G	123	S Levey	9	-	-	2.32. ²⁰	-	-	2.1 ³	10/1 Noumea					
3/16	-	7/10/16	-	Old Rowley Cup - 3yo hcp	NEW, GB	2400 RH GF	121	S Levey	5	-	-	2.34. ²³	-	-	3.1 ⁸	8/1 Scarlet Dragon					
1/5	-	19/8/17	-	0-110 hcp	NEWJ, GB	2400 RH S	127	S Levey	7	-	-	2.33. ⁴⁰	-	-	1.3 ⁵	3/1 Sofia's Rock					
4/6	-	9/9/17	106	G3 September S.	KEM, GB	2399 RH Poly	131	S Levey	1	-	-	2.34. ⁵⁵	-	-	4.1 ³	7/1 Chemical Charge					
2/7	-	22/9/17	-	0-110 hcp	NBY, GB	2400 LH G	138	R Moore	4	-	-	2.35. ²⁴	-	-	2.0 ⁸	3/1 Blakeney Point					
1/9	-	7/10/17	113	G3 Cumberland Lodge S.	ASC, GB	2392 RH GS	128	S Levey	9	-	-	2.40. ⁰²	-	-	1 ^{Nk}	8/1 Waldgeist					
3/11	-	28/10/17	112	G3 St. Simon S.	NBY, GB	2400 LH S	133	S Levey	6	-	-	2.40. ⁶⁸	-	-	3.3 ³	11/1 Best Solution					
		10/12/17		G1 LONGINES Hong Kong Vase	ST, HK	2400 RH	126	S Levey													

Useful handicapper who has made the leap to stakes company in recent starts. 5 wins from 16 starts, from 1600m to 2400m. First test at Group company came in the G3 September Stakes (2399m) at Kempton, finishing 4th to Chemical Charge. Took the G3 Cumberland Lodge Stakes (2392m) at Ascot two back before 3rd in the G3 St Simon Stakes (2400m) at Newbury latest. Leads or tracks speed. No ground concerns.



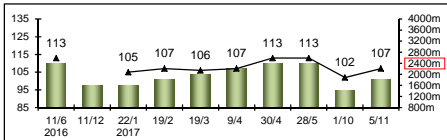
鷹雄
EAGLE WAY (AUS) 5 ch g
 More Than Ready (USA) - Wedgetail Eagle (AUS) (Lure (USA))
 Owner(s): Siu Pak Kwan



約翰摩亞 (香港)
J Moore (HK)
 142 (8-10-10-14-100)

貝湯美
T Berry
 121 (5-10-11-11-84)

126 lb
(113)



HK Career	:	9 (2-1-1-1-4)	Right-handed	:	22 (6-3-1-3-9)	Jockey	:	7 (1-0-0-2-4)
Pre Import	:	13 (4-2-0-2-5)	Sha Tin-Turf	:	9 (2-1-1-1-4)	GF+	:	5 (1-1-1-1-1)
Lifetime	:	22 (6-3-1-3-9)	Non-Turf	:	-	Good	:	13 (5-1-0-2-5)
2017/18	:	2 (0-0-0-0-2)	Distance	:	3 (2-0-1-0-0)	Yielding	:	2 (0-0-0-0-2)
G1	:	2 (1-0-1-0-0)	Track & Dist	:	2 (1-0-1-0-0)	Soft/Hvy	:	2 (0-1-0-0-1)
First Up	:	5 (1-1-0-1-2)	2200-2800	:	5 (2-2-1-0-0)	HK\$:	9,083,410
G1 win	:	16 Queensland Derby 2400m						

Pos	Index	Date	Perf Rating	Race Category & Name	Track	Dist/Course/Going	Wt	Jockey	Draw	Race Sectional Time	Race Time	Horse Final	Position & Margin in Running	Finish	Odds	Winner/Second					
1/18	-	11/6/16	113	G1 Queensland Derby - 3yo	E FM, AUS	2400 RH G	126	T Berry	11	-	-	36. ⁶⁸	2.32. ⁸⁰	-	11	5	1.1 ⁸	7	Rodrigo		
1/14	*259	11/12/16	-	- Cl.2 hcp	ST, HK	1600 RH G	130	H Bowman	5	24. ⁰⁶	23. ⁷³	22. ⁷¹	1.35. ⁹⁶	22. ¹⁹	6.3 ³	6.3 ³	7.3 ⁴	1 ^{HD}	13	Santa Fe Sun	
6/14	*360	22/1/17	105	- Hong Kong Classic Mile	ST, HK	1600 RH G	126	T Berry	6	23. ⁴⁶	24. ¹⁸	22. ⁴³	1.34. ⁹⁸	22. ²⁸	11.4 ³	11.6	12.4 ³	6.3 ⁴	11	Rapper Dragon	
4/13	*433	19/2/17	107	- Hong Kong Classic Cup	ST, HK	1800 RH GF	126	T Berry	13	24. ³⁸	24. ⁶²	22. ⁷⁰	1.46. ⁹⁸	22. ⁶²	12.12 ⁵	12.7 ⁴	10.4	4.3 ^{1/2}	16	Rapper Dragon	
6/14	*506	19/3/17	106	- BMW Hong Kong Derby	ST, HK	2000 RH GY	126	T Berry	10	24. ⁷⁰	23. ⁵⁹	23. ¹⁷	2.02. ⁸⁸	23. ⁵⁶	13.9 ³	13.6 ³	10.3 ^{1/2}	6.6	15	Rapper Dragon	
2/14	*561	9/4/17	107	- Cl.2 hcp	ST, HK	2200 RH GF	128	J Moreira	14	24. ⁸⁰	23. ¹⁵	23. ⁵⁹	2.12. ⁴²	23. ⁶¹	12.10 ⁴	4.2 ³	1.1 ²	2.5 ^H	4.4	Beauty Generation	
1/13	*612	30/4/17	113	G3 Queen Mother Memorial Cup - hcp	ST, HK	2400 RH GF	127	J Moreira	4	24. ²³	24. ³¹	23. ⁸⁵	2.25. ⁴⁸	23. ⁴⁹	9.5 ^{1/2}	9.4 ³	6.2 ^{1/4}	1.3 ⁴	2.1F	Helene Charisma	
3/7	*685	28/5/17	113	G1 Standard Chartered Champions & Chater Cup	ST, HK	2400 RH GF	126	J Moreira	7	25. ¹⁹	23. ⁴⁹	22. ³⁷	2.29. ²⁶	22. ⁵⁶	6.11 ^{1/2}	4.4	4.1 ³	3.3	2F	Werther	
6/13	80	1/10/17	102	G3 Celebration Cup - hcp	ST, HK	1400 RH GY	118	T Berry	5	22. ¹⁸	23. ⁴³	22. ⁵⁷	1.21. ⁸⁰	22. ³⁹	13.4	11.4	10.4 ^{3/4}	6.3 ⁴	19	Beauty Generation	
5/14	169	5/11/17	107	G3 Sa Sa Ladies' Purse - hcp	ST, HK	1800 RH GF	128	T Berry	3	22. ⁷⁶	23. ⁰⁴	23. ⁶⁸	1.45. ⁴¹	23. ⁴⁰	10.5	12.5 ³	12.6 ³	5.4 ^{1/2}	7.7	Nassa	
		10/12/17		G1 LONGINES Hong Kong Vase	ST, HK	2400 RH	126	T Berry													

G1 Queensland Derby (2400m) among 4 wins from 13 starts in Australia. Won first-up in Hong Kong in a Class 2 over 1600m on this day last year. Just off best four-year-olds but took the G3 Queen Mother Memorial Cup over this course and distance in April before finishing 3rd in the G1 Champions & Chater Cup. Ran on well in two G3 handicaps over 1400m and 1800m, but missed intended lead-up. Usually held-up. No ground queries.



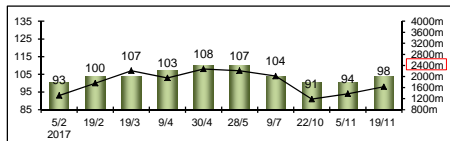
喜蓮彩星 A129
HELENE CHARISMA (FR) ex Mont Ormel 4 b c
 Air Chief Marshal (IRE) - Lidana (IRE) (King's Best (USA))
 Owner(s): Sir Po-shing & Lady Woo, Jackson Woo Ka Biu and The
 Executors of the Estate of the late Wilson Woo Ka Wah



約翰摩亞 (香港)
J Moore (HK)
 142 (8-10-10-14-100)

祈普敦
S Clipperton
 115 (10-11-6-8-80)

126 lb
(108)



HK Career	: 11 (0-1-1-1-8)	Right-handed	: 15 (1-1-3-1-9)	Jockey	: -
Pre Import	: 7 (3-0-3-0-1)	Sha Tin-Turf	: 11 (0-1-1-1-8)	GF+	: 6 (0-1-0-1-4)
Lifetime	: 18 (3-1-4-1-9)	Non-Turf	: -	Good	: 5 (0-0-2-0-3)
2017/18	: 3 (0-0-0-0-3)	Distance	: 3 (1-1-0-1-0)	Yielding	: 1 (0-0-0-0-1)
G1	: 2 (1-0-0-1-0)	Track & Dist	: 2 (0-1-0-1-0)	Soft/Hvy	: 6 (3-0-2-0-1)
First Up	: 4 (0-0-2-0-2)	2200-2800	: 4 (1-1-0-1-1)	HK\$: 5,574,190
G1 win	: '16 GP de Paris 2400m				

Pos	Index	Date	Perf Rating	Race Category & Name	Track	Dist/Course/Going	Wt	Jockey	Draw	Race Sectional Time	Race Time	Horse Final	Position & Margin in Running	Finish	Odds	Winner/Second				
7/9	*396	5/2/17	93	G3 Centenary Vase - hcp	ST, HK	1800 RH G	115	J Moreira	6	24.21	22.89	22.84	1.47.04	22.85	8 5½	8 5¼	8 4½	7 4½	2.3F	Supreme Profit
5/11	*432	19/2/17	100	- Cl.2 hcp	ST, HK	2000 RH GF	127	D Whyte	2	24.99	23.48	23.04	2.02.34	22.78	6 5	7 3¾	8 2½	5 3¼	10	Booming Delight
5/14	*506	19/3/17	107	- BMW Hong Kong Derby	ST, HK	2000 RH GY	126	D Whyte	14	24.70	23.59	23.17	2.02.88	23.39	12 7¾	10 5¼	14 4¼	5 5½	65	Rapper Dragon
5/14	*561	9/4/17	103	- Cl.2 hcp	ST, HK	2200 RH GF	125	D Whyte	8	24.80	23.15	23.59	2.12.42	23.66	11 8¾	7 4¼	5 2¼	5 2¼	6.2	Beauty Generation
2/13	*612	30/4/17	108	G3 Queen Mother Memorial Cup - hcp	ST, HK	2400 RH GF	124	D Whyte	9	24.23	23.31	23.85	2.25.48	23.45	12 7½	11 6¼	7 3¼	2 3¼	8	Eagle Way
4/7	*685	28/5/17	107	G1 Standard Chartered Champions & Chater Cup	ST, HK	2400 RH GF	126	D Whyte	4	25.19	23.49	22.37	2.29.26	22.94	5 10½	7 5¾	6 3½	4 7	6.7	Werther
3/12	*787	9/7/17	104	- Cl.2 hcp	ST, HK	2000 RH G	133	Z Purton	12	24.76	23.42	23.15	2.00.41	22.51	10 10½	10 8½	9 4¼	3 N	5.7	General Sherman
11/12	132	22/10/17	91	- Cl.2 hcp	ST, HK	1800 RH GF	132	T Berry	7	23.34	23.20	23.15	1.46.38	23.29	10 6	10 8½	11 7½	11 8½	10	Gold Mount
8/14	169	5/11/17	94	G3 Sa Sa Ladies' Purse - hcp	ST, HK	1800 RH GF	119	Z Purton	9	22.76	23.04	23.68	1.45.41	23.96	12 6½	10 5¼	9 5	8 6¼	11	Nassa
8/8	204	19/11/17	98	G2 BOCHK Jockey Club Cup	ST, HK	2000 RH G	123	U Rispoli	4	23.34	23.54	23.25	2.01.52	23.49	8 14½	8 13½	8 6¼	8 7¾	27	Werther
		10/12/17		G1 LONGINES Hong Kong Vase	ST, HK	2400 RH	126	S Clipperton												

Yet to win in Hong Kong from 11 starts. Three wins from seven starts in France pre-import, with his career pinnacle coming in the G1 Grand Prix de Paris (2400m) at Saint-Cloud in July, 2016. Not far away from best four-year-olds last season, with his best effort 2nd to Eagle Way in the G3 Queen Mother Memorial Cup (2400m). Out of sorts in three runs this campaign, including 8th in G2 Jockey Club Cup (2000m) latest. Usually held-up, can sustain a long run. Prefers cut.



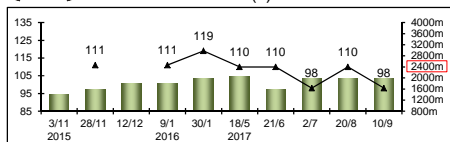
來電管家
SMART CALL (SAF) 6 b m
 Ideal World (USA) - Good Judgement (USA) (Horse Chestnut (SAF))
 Owner(s): Miss Jessica Slack



司徒德爵士 (英國)
Sir M R Stoute (GB)

高俊誠
J Crowley

122 lb
(110)



HK Starts	: -	Right-handed	: 16 (4-4-2-1-5)	Jockey	: 3 (0-0-1-1-1)
Pre Import	: -	Sha Tin-Turf	: -	GF+	: 1 (0-0-0-1-0)
Lifetime	: 21 (7-4-3-2-5)	Non-Turf	: -	Good	: 17 (7-4-2-1-3)
2017	: 5 (0-0-1-2-2)	Distance	: -	Yielding	: 1 (0-0-0-0-1)
G1	: 8 (3-1-0-1-3)	Track & Dist	: -	Soft/Hvy	: 2 (0-0-1-0-1)
First Up	: 4 (1-1-0-1-0)	2200-2800	: -	HK\$: 2,308,170
G1 win	: '16 The Met 2000m, '16 Paddock S. 1800m, '15 Woolavington 2000 2000m				

Pos	Index	Date	Perf Rating	Race Category & Name	Track	Dist/Course/Going	Wt	Jockey	Draw	Race Sectional Time	Race Time	Horse Final	Position & Margin in Running	Finish	Odds	Winner/Second			
5/7	-	3/11/15	-	- Pinnacle S. - f&m	TFF, SAF	1400 RH G	136	W C Marwing	5	-	-	-	1.23.89	-	-	5 3.3	1/1F	Bichette	
1/7	-	28/11/15	111	G2 Ipi Tombe Challenge - f&m	TFF, SAF	1600 RH G	132	W C Marwing	6	-	-	-	1.38.31	-	-	1 0.8	6/5F	Bichette	
1/4	-	12/12/15	-	- conditions f&m	TFF, SAF	1800 RH G	128	W C Marwing	1	-	-	-	1.51.47	-	-	1 2	3/10F	Pine Princess	
1/16	-	9/1/16	111	G1 Paddock S. - f&m	KEN, SAF	1800 LH G	131	W C Marwing	4	-	-	-	1.51.77	-	-	1 2	33/10F	Inara	
1/14	-	30/1/16	119	G1 The Met	KEN, SAF	2000 LH G	126	J van der Merwe	8	-	-	-	2.03.17	-	-	1 3.5	8/1	Legal Eagle	
3/4	-	18/5/17	110	G2 Middleton S. - f&m	YOR, GB	2051 LH GS	129	J Crowley	5	-	-	-	2.09.76	-	-	3 1.5	5/1	Blond Me	
4/14	-	21/6/17	110	G2 Duke Of Cambridge S. - f&m	ASC, GB	1600 St GF	126	R Moore	11	-	-	-	1.38.34	-	-	4 1.8	9/2	Qemah	
7/11	-	2/7/17	98	G1 Pretty Polly S. - f&m	CUR, IRE	2000 RH G	134	J Crowley	3	-	-	-	2.06.19	-	-	7 8.8	13/2	Nezwaah	
4/10	-	20/8/17	110	G1 P. Jean Romanet - f&m	DEA, FR	2000 RH G	126	J Crowley	5	-	-	-	2.04.13	-	-	4 1.5	12	Ajman Princess	
6/9	-	10/9/17	98	G2 Blandford S. - f&m	CUR, IRE	2000 RH YS	132	D O'Brien	9	-	-	-	2.12.84	-	-	6 6.3	8/1	Shamreen	
		10/12/17		G1 LONGINES Hong Kong Vase	ST, HK	2400 RH	122	J Crowley											

Winner of 3 G1s in South Africa – the Woolavington 2000 (2000m), the Paddock Stakes (1800m) and the Met (2000m) – among 7 victories from 1400m to 2000m. Transferred from Alec Laird to Sir Michael Stoute last winter. Yet to win from 5 starts for the Newmarket handler, although closed well for 4th in G1 Prix Jean Romanet (2000m) two back. Untried beyond 2100m. Tactically versatile but best when held-up and produced late. Best on top of the ground.



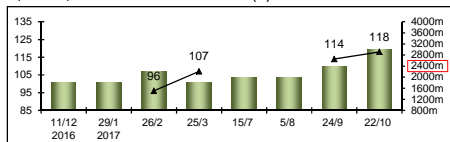
神業
KISEKI (JPN) 3 db c
 Rulership (JPN) - Blitz Finale (JPN) (Deep Impact (JPN))
 Owner(s): Tatsue Ishikawa



角居勝彦 (日本)
K Sumii (JPN)

杜滿萊
M Demuro

121 lb
(118)



HK Starts	: -	Right-handed	: 5 (2-1-2-0-0)	Jockey	: 3 (2-1-0-0-0)
Pre Import	: -	Sha Tin-Turf	: -	GF+	: 7 (3-1-2-0-1)
Lifetime	: 8 (4-1-2-0-1)	Non-Turf	: -	Good	: -
2017	: 7 (3-1-2-0-1)	Distance	: 1 (0-1-0-0-0)	Yielding	: -
G1	: 1 (1-0-0-0-0)	Track & Dist	: -	Soft/Hvy	: 1 (1-0-0-0-0)
First Up	: 2 (2-0-0-0-0)	2200-2800	: 2 (0-1-1-0-0)	HK\$: 15,219,540
G1 win	: '17 Kikuka Sho 3000m				

Pos	Index	Date	Perf Rating	Race Category & Name	Track	Dist/Course/Going	Wt	Jockey	Draw	Race Sectional Time	Race Time	Horse Final	Position & Margin in Running	Finish	Odds	Winner/Second				
1/8	-	11/12/16	-	- 2yo unraced	HSN, JPN	1800 RH F	121	C Lemaire	4	25.10	23.30	23.20	1.49.50	34.50	-	3 -	3 -	1 3.5	2.4	Granny's Chips
5/11	-	29/1/17	-	- 3yo ¥5M or below	TOK, JPN	1800 LH F	123	M Ebina	7	25.30	24.20	22.30	1.47.70	33.40	6 -	4 -	5 -	5 2.8	2.6F	Daiwa Cagney
3/7	-	26/2/17	96	- 3yo open	HSN, JPN	2200 RH F	123	Y Kawada	5	24.70	23.90	24.20	2.14.10	36.30	5 -	5 -	5 -	3 5.3	1.9F	Clincher
3/8	-	25/3/17	107	G3 Mainichi Hai - 3yo	HSN, JPN	1800 RH F	123	A Starke	6	24.90	23.10	23.30	1.46.50	33.40	-	7 -	7 -	3 1	32.8	Al Ain
1/13	-	15/7/17	-	- ¥5M or below	CYO, JPN	2000 LH F	119	Y Fukunaga	4	23.70	23.40	23.20	1.59.10	33.20	11 -	10 -	11 -	1 2	1.5F	Suzuka Deep
1/14	-	5/8/17	-	- ¥10M or below hcp	NII, JPN	2000 LH F	119	M Demuro	5	24.90	24.10	22.50	1.56.90	32.90	-	12 -	12 -	1 1.5	2.0F	Black Platinum
2/14	-	24/9/17	114	G2 Kobe Shimbun Hai - 3yo	HSN, JPN	2400 RH F	123	M Demuro	5	24.50	23.20	23.20	2.24.60	33.90	10 -	9 -	10 -	2 2	3.5	Rey de Oro
1/18	-	22/10/17	118	G1 Kikuka Sho - 3yo	KYO, JPN	3000 RH S	126	M Demuro	13	26.10	26.30	26.60	3.18.90	39.60	14 -	12 -	7 -	1 2	4.5F	Clincher
		10/12/17		G1 LONGINES Hong Kong Vase	ST, HK	2400 RH	121	M Demuro												

Only debuted on HKIR day 12 months ago, winning a two-year-old event at Hanshin over 1800m. Still developing in three early-season runs. Returned with two dominant 2000m wins at Chukyo and Niigata. Upped in class for fast-finishing second to Japanese Derby winner Rey De Oro in the G2 Kobe Shimbun Hai (2400m) in September. Class shone through in G1 Kikuka Sho (3000m) win last time out. Settles beyond midfield. No ground concerns.

