

S2-3 Duke of Edinburgh Stakes (Handicap) - Racing Colours



AJERO



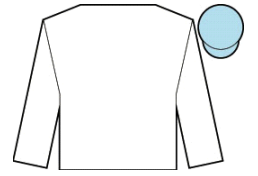
BRILLIANT LIGHT



CANDLEFORD



CAP FRANCAIS



CEMHAAN



CHICHESTER



CONTACT



EVER PRESENT



GOLD MAZE



JUST FINE



KELLY'S DINO



KENZAI WARRIOR



LONGBOURN



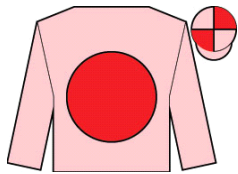
MASHHOOR



MOKTASAAB



SIR RUMI



STATE OF BLISS



STAY WELL



TRAWLERMAN